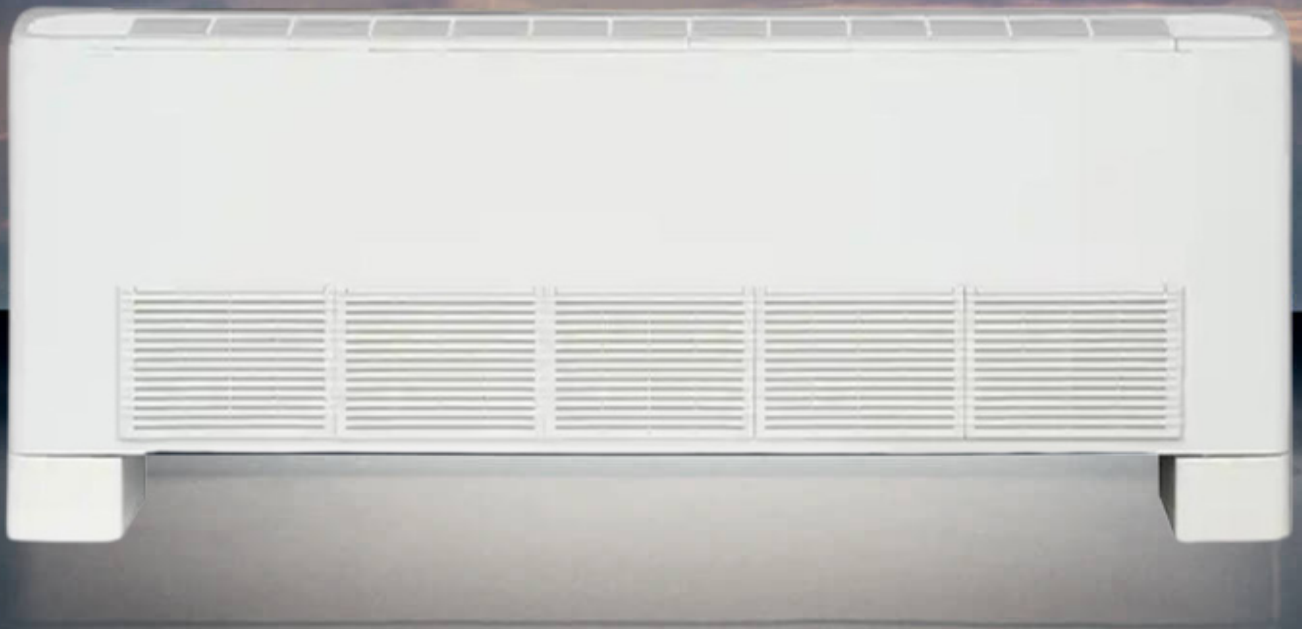


TERRA FLOOR STANDING FAN COIL



AIR FLOW: 200 – 1400 M³/H
COOLING CAPACITY: 1.80KW-12.60KW

1 YEAR WARRANTY, SPARE PARTS AVAILABILITY
AND SERVICE GUARANTEED

CENTRIFUGAL FAN

CENTRIFUGAL FAN WITH GALVANIZED STEEL WHICH IS DYNAMICALLY BALANCED.

CONDENSATE DRAIN PAN

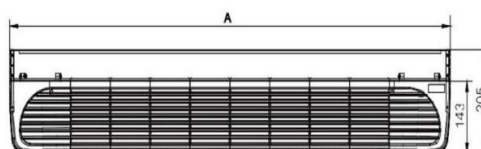
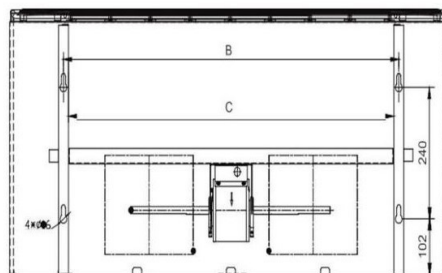
L SHAPED DRAIN PAN, SUITABLE FOR HORIZONTAL AND/OR VERTICAL INSTALLATION.

HIGH EFFICIENCY HEAT EXCHANGER

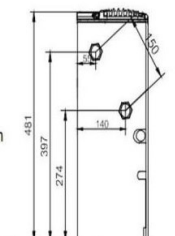
THE HEAT EXCHANGER COILS ARE MADE OF COPPER TUBES AND ALUMINIUM FINS. ALL COILS ARE PRESSURE TESTED AT 30BAR(3MPA) PRESSURE.

CONTROL VALVE

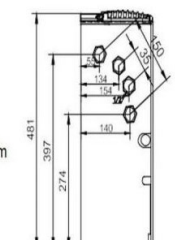
2-WAY VALVE OR 3-WAY VALVE (OPTIONAL).



A view
2-pipe system



A view
4-pipe system



TERRA FLOOR STANDING FAN COIL

| Dim | TR200 | TR300 | TR400 | TR500 | TR600 | TR700 | TR800 | TR1000 | TR1200 | TR1400 |
|--------|-------|-------|-------|-------|-------|-------|-------|--------|--------|--------|
| A | 1015 | 1015 | 1015 | 1015 | 1370 | 1370 | 1725 | 1725 | 2080 | 2080 |
| B | 735 | 735 | 735 | 735 | 1090 | 1090 | 1445 | 1445 | 1800 | 1800 |
| C | 710 | 710 | 710 | 710 | 1065 | 1062 | 1420 | 1420 | 1775 | 1775 |
| Height | 100 | 100 | 100 | 100 | 100 | 100 | 100 | 100 | 100 | 100 |

| Unit model AC/EC | | | MRUM200-Z | MRUM300-Z | MRUM400-Z | MRUM500-Z | MRUM600-Z | MRUM700-Z | MRUM800-Z | MRUM1000-Z | MRUM1200-Z | MRUM1400-Z |
|-------------------------------|-----------------------------------|------------------------|--------------|--------------|--------------|--------------|--------------|--------------|--------------|--------------|--------------|------------|
| Air volum | H | m ³ /h | 340 | 510 | 680 | 850 | 1020 | 1190 | 1360 | 1700 | 2040 | 2380 |
| | L | | 255 | 383 | 510 | 638 | 765 | 893 | 1020 | 1275 | 1530 | 1785 |
| | M | | 170 | 255 | 340 | 425 | 510 | 595 | 680 | 850 | 1020 | 1190 |
| cooling | cooling capacity | H | 1.8 | 2.7 | 3.6 | 4.5 | 5.4 | 6.3 | 7.2 | 9 | 10.8 | 12.6 |
| | | L | 1.44 | 2.16 | 2.88 | 3.6 | 4.32 | 5.04 | 5.76 | 7.2 | 8.64 | 10.08 |
| | | M | 1.08 | 1.62 | 2.16 | 2.7 | 3.24 | 3.78 | 4.32 | 5.4 | 6.48 | 7.56 |
| | water flow | L/h | 320 | 500 | 610 | 780 | 940 | 1100 | 1200 | 1650 | 1850 | 2150 |
| | water resistance | kPa | 30 | 30 | 30 | 30 | 40 | 40 | 40 | 40 | 40 | 40 |
| heating | 60°C water | H | 2.7 | 4.05 | 5.4 | 6.75 | 8.1 | 9.45 | 10.8 | 13.5 | 16.2 | 18.9 |
| | | L | 2.16 | 3.24 | 4.32 | 5.4 | 6.48 | 7.56 | 8.64 | 10.8 | 12.96 | 15.12 |
| | | M | 1.62 | 2.43 | 3.24 | 4.05 | 4.86 | 5.67 | 6.48 | 8.1 | 9.72 | 11.34 |
| | 45°C water | H | 1.8 | 2.7 | 3.6 | 4.5 | 5.4 | 6.3 | 7.2 | 9 | 10.8 | 12.6 |
| | | L | 1.44 | 2.16 | 2.88 | 3.6 | 4.32 | 5.04 | 5.76 | 7.2 | 8.64 | 10.08 |
| | | M | 1.08 | 1.62 | 2.16 | 2.7 | 3.24 | 3.78 | 4.32 | 5.4 | 6.48 | 7.56 |
| FAN | FORM | Centrifugal wind wheel | | | | | | | | | | |
| | SIZE (Dia.) | mm | Φ156*175 | Φ156*175 | Φ156*175 | Φ156*175 | Φ156*175 | Φ156*175 | Φ156*175 | Φ156*175 | Φ156*175 | Φ156*175 |
| quantity | | | 1 | 2 | 2 | 2 | 2 | 2 | 4 | 4 | 4 | 4 |
| Power mode | V/Ph/Hz | 220/1/50-60 | | | | | | | | | | |
| Input power | W | 36 | 50 | 60 | 74 | 93 | 112 | 130 | 147 | 183 | 221 | |
| Operating current | A | 0.16 | 0.23 | 0.27 | 0.34 | 0.42 | 0.51 | 0.59 | 0.67 | 0.83 | 1 | |
| noise | dB(A) | 37 | 39 | 41 | 43 | 45 | 46 | 46 | 48 | 50 | 52 | |
| Control mode | Three speed switch/remote control | | | | | | | | | | | |
| Dimensions of machine with | mm | 1015*584*246 | 1015*584*246 | 1015*584*246 | 1015*584*246 | 1370*584*246 | 1370*584*246 | 1725*584*246 | 1725*584*246 | 2080*584*246 | 2080*584*246 | |
| Net weight of machine with | kg | 20.7 | 20.7 | 21.2 | 21.2 | 28.3 | 28.3 | 38.3 | 38.3 | 45.3 | 45.3 | |
| Dimensions of machine without | mm | 1015*484*246 | 1015*484*246 | 1015*484*246 | 1015*484*246 | 1370*484*246 | 1370*484*246 | 1725*484*246 | 1725*484*246 | 2080*484*246 | 2080*484*246 | |
| Net weight of machine without | kg | 19.9 | 19.9 | 20.4 | 20.4 | 27.5 | 27.5 | 37.5 | 37.5 | 44.5 | 44.5 | |
| water | wet return | in | ZG3/4" | | | | | | | | | |
| pipe | outlet pipe | in | ZG3/4" | | | | | | | | | |
| drain | pipe (external) | mm | 20 | | | | | | | | | |